

PLUMBING SYMBOL LIST

NOTE: This is a standard symbol list and not all items listed may be used.

Abbreviations

(E)	EXISTING	IE	INVERT ELEVATION
(N)	NEW	OD	OVERFLOW DRAIN, OUTSIDE DIAMETER
AFF	ABOVE FINISHED FLOOR	RD	ROOF DRAIN
BFF	BELOW FINISHED FLOOR	SD	STORM DRAIN
CD	CONDENSATE DRAIN	SF	SQUARE FEET
CO	CLEANOUT	SOV	SHUT OFF VALVE
CONT.	CONTINUATION	T&P	TEMPERATURE AND PRESSURE
CW	COLD WATER	TDL	TOTAL DEVELOPED LENGTH
DN	DOWN	VTR	VENT THRU ROOF
FCO	FLOOR CLEANOUT	W	WASTE
FD	FLOOR DRAIN	WCO	WALL CLEANOUT
FF	FINISHED FLOOR		
HB	HOSE BIBB		
HW	HOT WATER		
HWR	HOT WATER RETURN		

Piping Fittings

	CAP
	CLEANOUT TO GRADE
	FLOOR CLEANOUT
	FLOOR DRAIN
	HOSE BIBB
	PIPE DROP
	PIPE RISE
	TEE DOWN ON PIPE
	VENT THROUGH ROOF
	WALL CLEANOUT

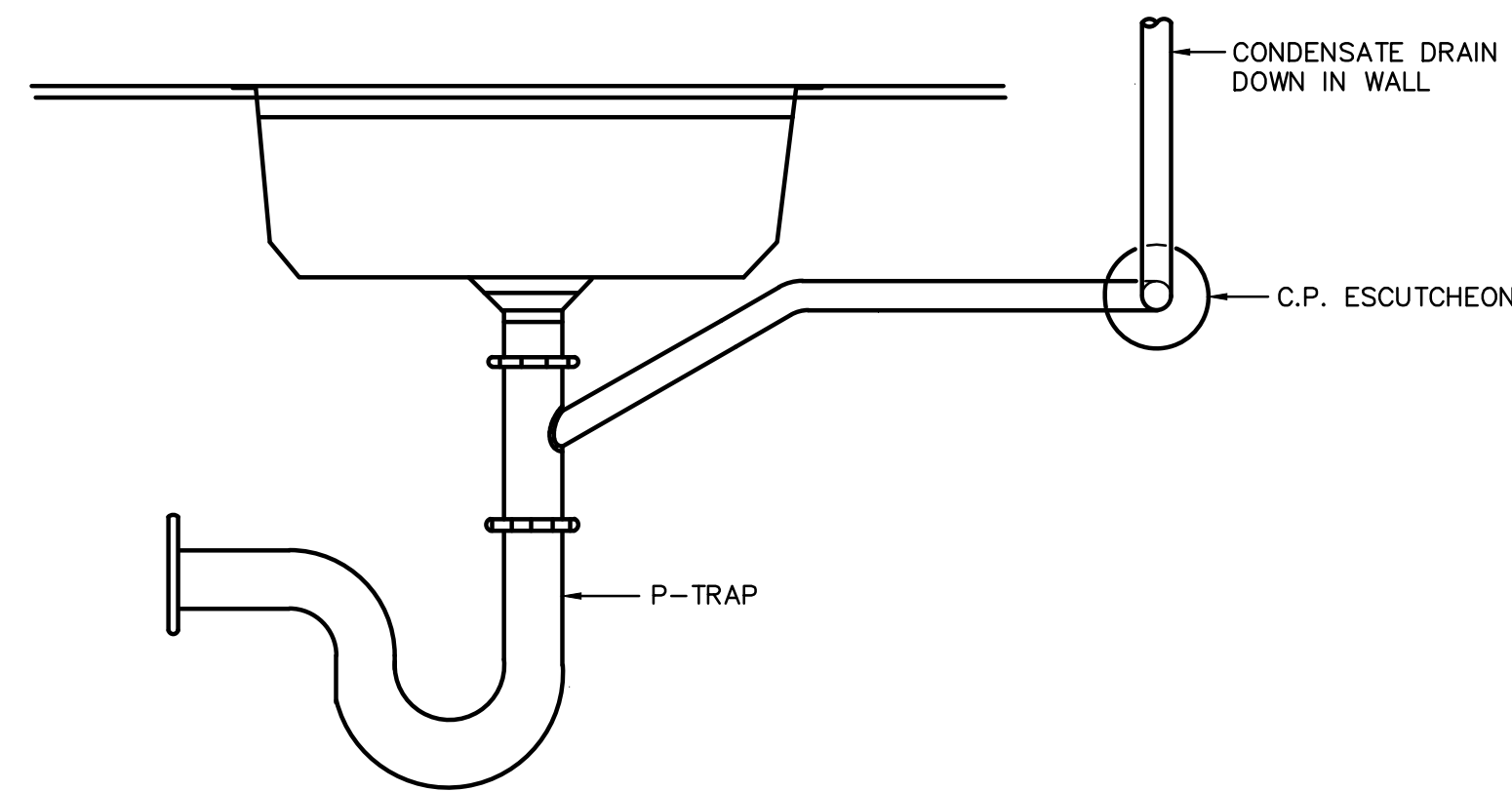
General

	CONTINUATION
	DEMOLISH
	FIXTURE TAG (LEVEL BELOW FIXTURE)
	KEYED NOTE
	PIPE BELOW GRADE
	POINT OF CONNECTION
	BACKFLOW PREVENTER
	GLOBE VALVE
	PRESSURE REDUCING VALVE
	SHUTOFF VALVE, GENERAL

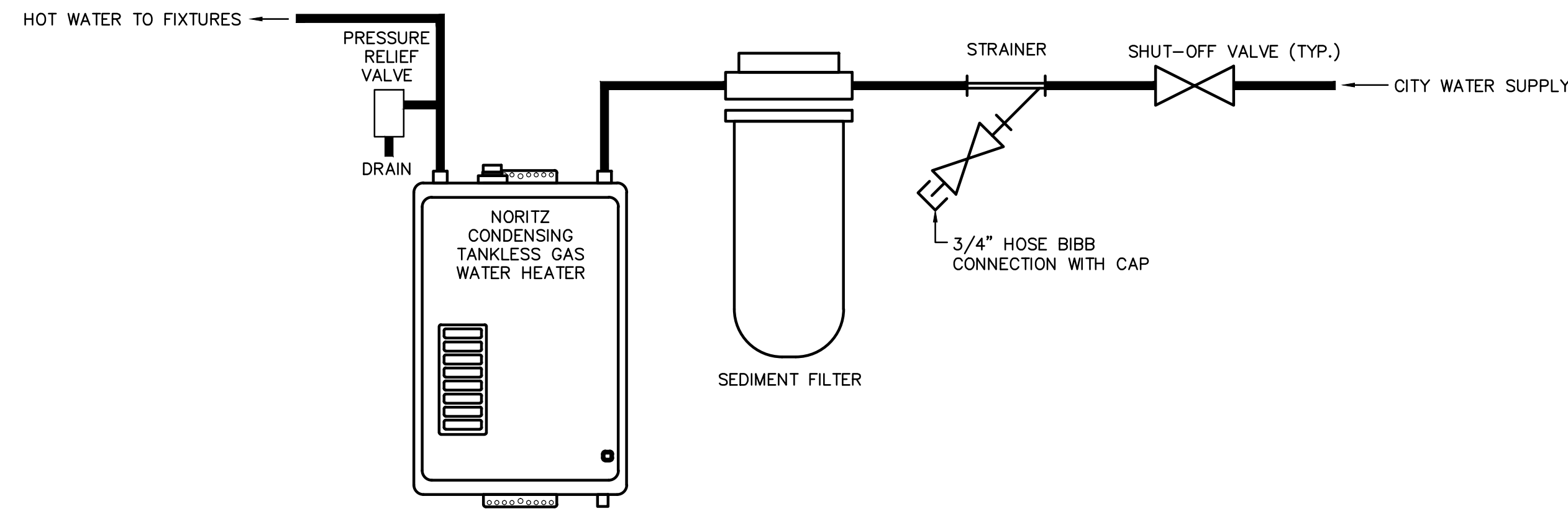
Valves

Piping Systems

	COLD WATER PIPING
	GREASE WASTE ABOVE GRADE OR FINISHED FLOOR
	GREASE WASTE BELOW GRADE OR FINISHED FLOOR
	HOT WATER PIPING
	HOT WATER RETURN PIPING
	NATURAL GAS PIPING, STANDARD PRESSURE
	OVERFLOW DRAIN PIPING ABOVE GRADE OR FINISHED FLOOR
	SANITARY VENT PIPING
	SANITARY WASTE OR SOIL PIPING ABOVE GRADE OR FINISHED FLOOR
	CONDENSATE DRAIN PIPING
	SANITARY WASTE OR SOIL PIPING BELOW GRADE OR FINISHED FLOOR
	STORM DRAIN PIPING ABOVE GRADE OR FINISHED FLOOR
	STORM DRAIN PIPING BELOW GRADE OR FINISHED FLOOR
	TRAP PRIMER PIPING



1 CONDENSATE DRAIN CONNECTION DETAIL
NO SCALE



NOTE: INSTALL ALL EQUIPMENT TO BE EASILY ACCESSIBLE

2 WATER TREATMENT SYSTEM DETAIL
NO SCALE

PLUMBING FIXTURE SCHEDULE

SYMBOL	DESCRIPTION	CONNECTION			
		W	V	CW	HW
BT-1	TUB/SHOWER HEADS/TRIM: BARRIER FREE, ADJUSTABLE TEMPERATURE LIMIT STOP, LEVER STYLE HANDLE, 1.75 GPM SHOWERHEAD, POP-UP CFG: 40311GCR CFG VALVE: 45311 FITTINGS: TRIP LEVER WASTE/OVERFLOW P-TRAP.	2"	1-1/2"	1/2"	1/2"
L-1	LAVATORY: BARRIER FREE, COUNTERTOP, 20-1/4 IN. BY 17-1/2 IN. OVAL, OVERFLOW, SELF-RIMMING, VITREOUS CHINA, KOHLER K-2196-4 (PENNINGTON) FITTINGS: 1-1/4 IN. BY 1-1/2 IN. P-TRAP. SUPPLIES AND STOPS, FOR BARRIER FREE. PROVIDE INSULATION KIT TO P-TRAP AND SUPPLIES. SEE SPECIFICATIONS. FAUCET: BARRIER FREE, 1.5 GPM AERATOR, LEVER STYLE HANDLE CFG: 40225	1-1/2"	1-1/2"	1/2"	1/2"
S-1	SINK: SELF RIMMING, 18 GAUGE BRUSHED STAINLESS STEEL, 4" CENTERS, 33 IN.x22 IN.x8 IN., MOEN: G182133 FAUCET: BARRIER FREE, BRASS CONSTRUCTION, 9" SPOUT, 1.5 GPM AERATOR, DECK PLATE, CFG: 40616	2"	1-1/2"	1/2"	1/2"
WC-1	WATER CLOSET: VITREOUS CHINA, ELONGATED BOWL, FLOOR MOUNT, TANK TYPE, 1-1/2" TOP SPUD, 1.28 GPF, BOLT CAPS, KOHLER: K-3997 (WELLWORTH) SEAT: COMMERCIAL WEIGHT HEAVY-DUTY PLASTIC, STAINLESS STEEL CHECK HINGE, WHITE, KOHLER: K-4636	4"	2"	1/2"	---

PLUMBING EQUIPMENT SCHEDULE

SYMBOL	DESCRIPTION	ELECTRICAL
		ALL MECHANICAL EQUIPMENT SHALL BE INSTALLED PER MANUFACTURES RECOMMENDATIONS
WH-1 (TYP. ALL UNITS)	TANKLESS WATER HEATER: GAS-FIRED, 120,000 BTU INPUT, DRAIN VALVE, T & P VALVE, PROVIDE ISOLATION VALVE KIT, CONDENSATE NEUTRALIZER KIT, VENT KIT, AND WATER TREATMENT SYSTEM NORITZ NRC663-FSV	120V

SHEET INDEX

P0.1	PLUMBING SYMBOLS, GENERAL NOTES AND FIXTURE SCHEDULE
P0.2	PLUMBING SPECIFICATIONS AND GAS CALCULATIONS.
P2.1	BUILDINGS 'A' AND 'B' FIRST AND SECOND FLOOR DEMO PLANS - PLUMBING
P2.2	BUILDING 'C' FIRST AND SECOND FLOOR DEMO PLANS - PLUMBING
P2.3	BUILDINGS 'A', 'B' AND 'C' FIRST AND SECOND FLOOR PLANS - PLUMBING

GENERAL PLUMBING NOTES

- COORDINATE INSTALLATION OF PIPING BELOW AND ABOVE GRADE WITH STRUCTURAL COMPONENTS AND OTHER SYSTEM INSTALLATION.
- ALL PENETRATIONS THRU FLOORS AND WALLS BELOW GRADE TO BE SEALED AT SLEEVES WITH MECHANICAL SEALING SYSTEM, "LINK SEAL" OR APPROVED.
- COORDINATE ALL FIXTURES, EQUIPMENT LOCATION AND DRAIN LOCATIONS WITH ARCHITECTURAL DRAWINGS.
- LOCATE ALL VALVES FOR SERVICE ACCESSIBILITY.
- PROVIDE CLEANOUTS PER 2013 CPC §707.0 AS REQUIRED. PROVIDE COVER PLATES FOR VISIBLE WALL CLEANOUTS.

GENERAL PLUMBING NOTES

- PROVIDE GAS SHUTOFF VALVES, PRESSURE REGULATORS AND UNION (OR CODE APPROVED APPLIANCE CONNECTORS) AT CONNECTIONS TO ALL GAS-FIRED EQUIPMENT. PROVIDE REGULATOR RELIEF VENT PIPING TO ATMOSPHERE WHERE REQUIRED BY CODE.
- COORDINATE INSTALLATION OF PIPING BELOW AND ABOVE GRADE WITH STRUCTURAL COMPONENTS AND OTHER SYSTEM INSTALLATION.
- ALL PENETRATIONS THRU FLOORS AND WALLS BELOW GRADE TO BE SEALED AT SLEEVES WITH MECHANICAL SEALING SYSTEM, "LINK SEAL" OR APPROVED.
- COORDINATE ALL FIXTURES, EQUIPMENT, PIPE ROUGH-IN/CONNECTION LOCATION AND DRAIN LOCATIONS WITH ARCHITECTURAL DRAWINGS.
- LOCATE ALL VALVES FOR SERVICE ACCESSIBILITY.
- VERIFY EXACT LOCATION OF ALL CONNECTIONS TO PIPING INSTALLED BY SITE CONTRACTOR.
- PIPING TO BE ROUTED IN COORDINATION WITH LIGHTING, DUCTWORK AND OTHER DISCIPLINES.
- PROVIDE CLEANOUTS PER 2013 CPC §707.0 AS REQUIRED. PROVIDE COVER PLATES FOR VISIBLE WALL CLEANOUTS.
- PROVIDE PIPING, EQUIPMENT, AND MATERIALS IN ACCORDANCE WITH APPLICABLE PLUMBING CODE REGULATIONS AND STANDARDS, AUTHORITIES HAVING JURISDICTION, AND AS OTHERWISE RECOMMENDED OR DIRECTED BY MANUFACTURERS.
- CONDENSATE DRAINS SHALL DRAIN TO A CODE COMPLIANT LOCATION.



monighandesign
710 Twelfth Street
Sacramento, CA 95814
Phone: 916.448.5401
www.monighan.com



Date Signed: 11/01/16

Stanton
ENGINEERING
PROJECT: 15073
1819 K Street, Suite 250
Sacramento, CA 95811
TEL: 916.288.6250
www.stantoneg.com

PLUMBING SYMBOLS AND
GENERAL NOTES

RICHLAND HOUSING PHASE II
DEVELOPMENT 1, BUILDING TYPES 'A', 'B' & 'C'
REHABILITATION & IMPROVEMENTS

YUBA CITY, CALIFORNIA 95992

DATE 11/24/2016
DRAWN BY GS/NN/KD
JOB 15002-000
SHEET

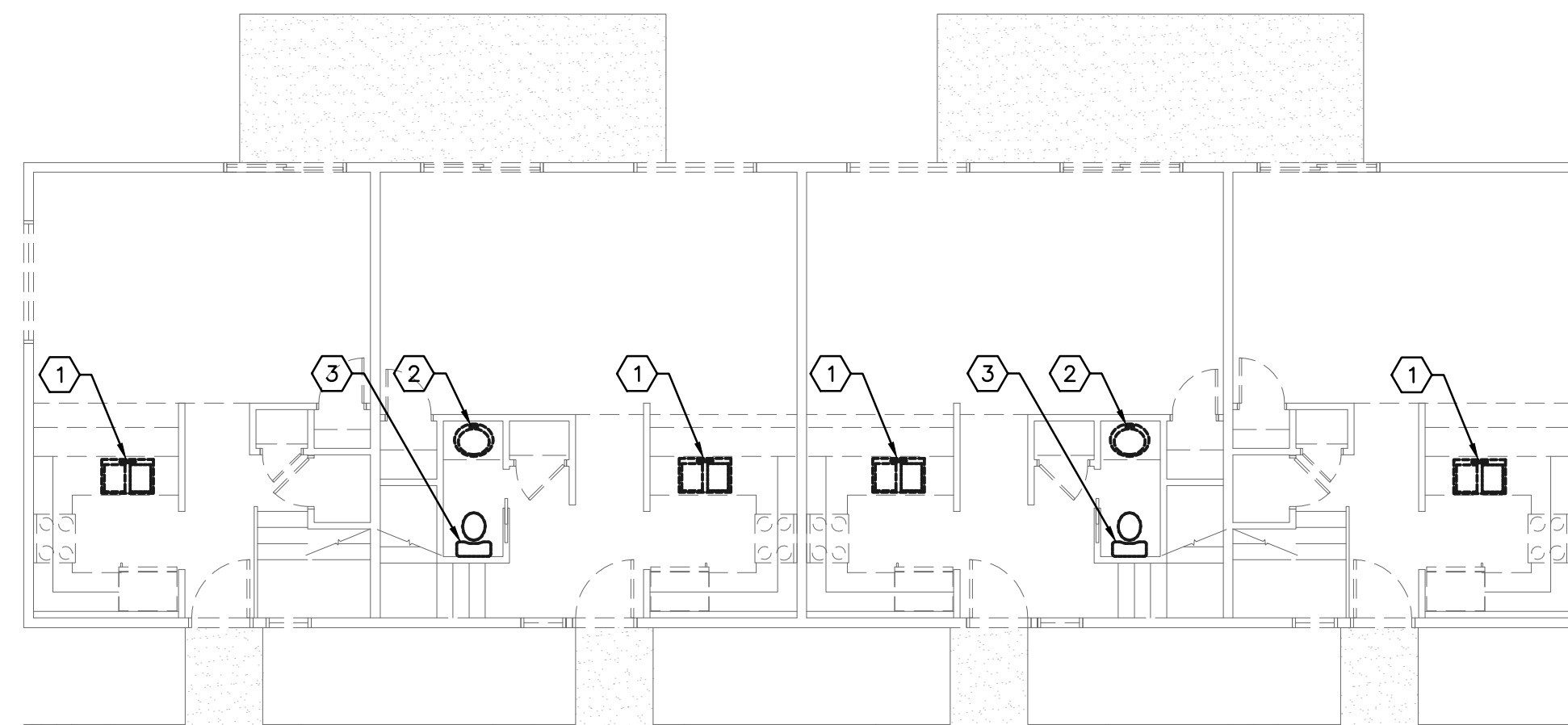
P0.1

GENERAL SHEET NOTES

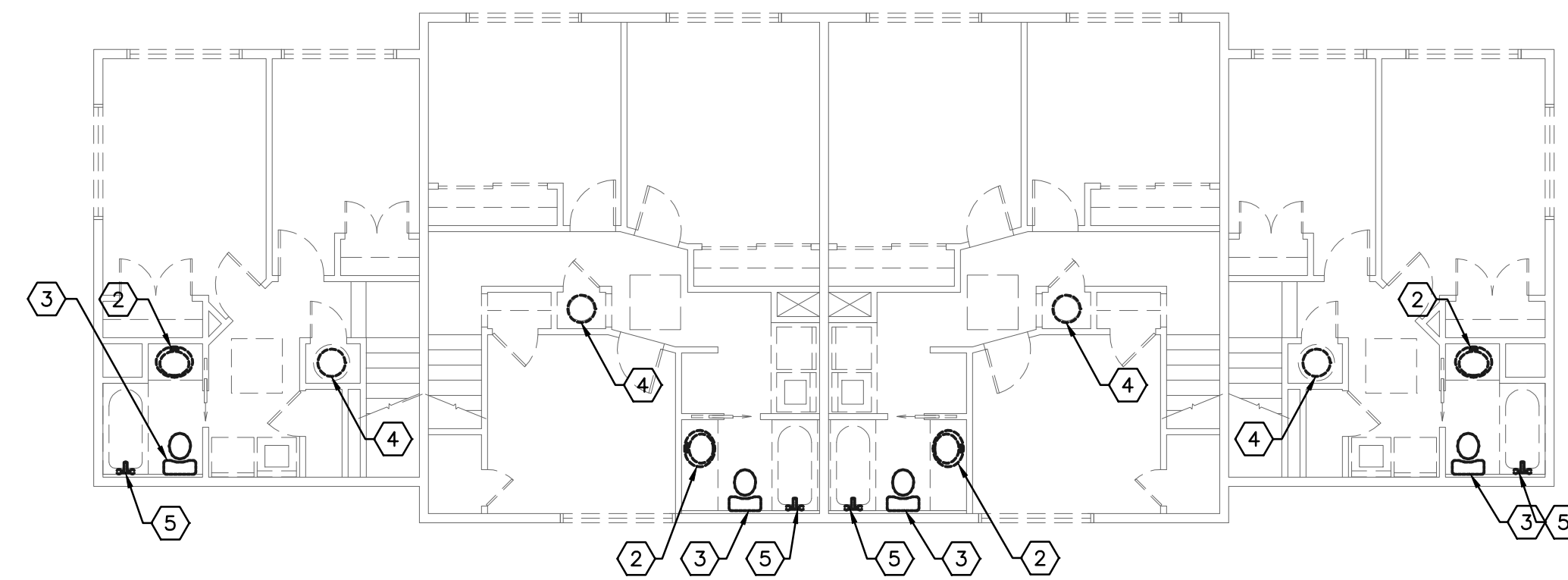
- A. DISCONNECT GAS PIPING FROM ALL EXISTING GAS METERS. DEMOLISH OR ABANDON IN PLACE ALL GAS PIPING AS REQUIRED.

SHEET KEYNOTES

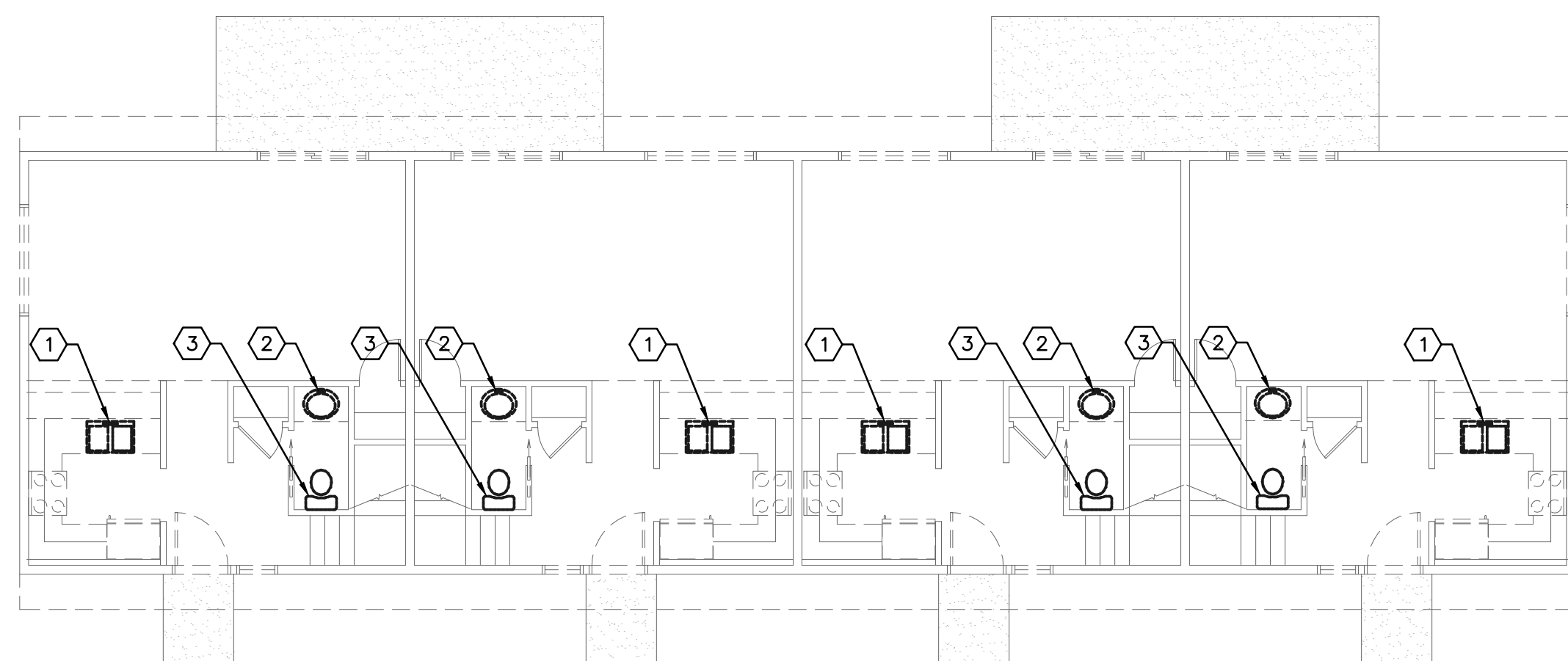
- 1 REMOVE EXISTING KITCHEN SINK AND ALL ASSOCIATED PIPING.
- 2 REMOVE EXISTING LAVATORY AND ALL ASSOCIATED PIPING.
- 3 REMOVE EXISTING WATER CLOSET AND ALL ASSOCIATED PIPING.
- 4 REMOVE EXISTING WATER HEATER AND ALL ASSOCIATED PIPING.
- 5 REMOVE EXISTING TUB SPOUT, SHOWER HEAD, CONTROL VALVE AND DRAIN. OPEN UP FLOOR AND REMOVE EXISTING TRAP.



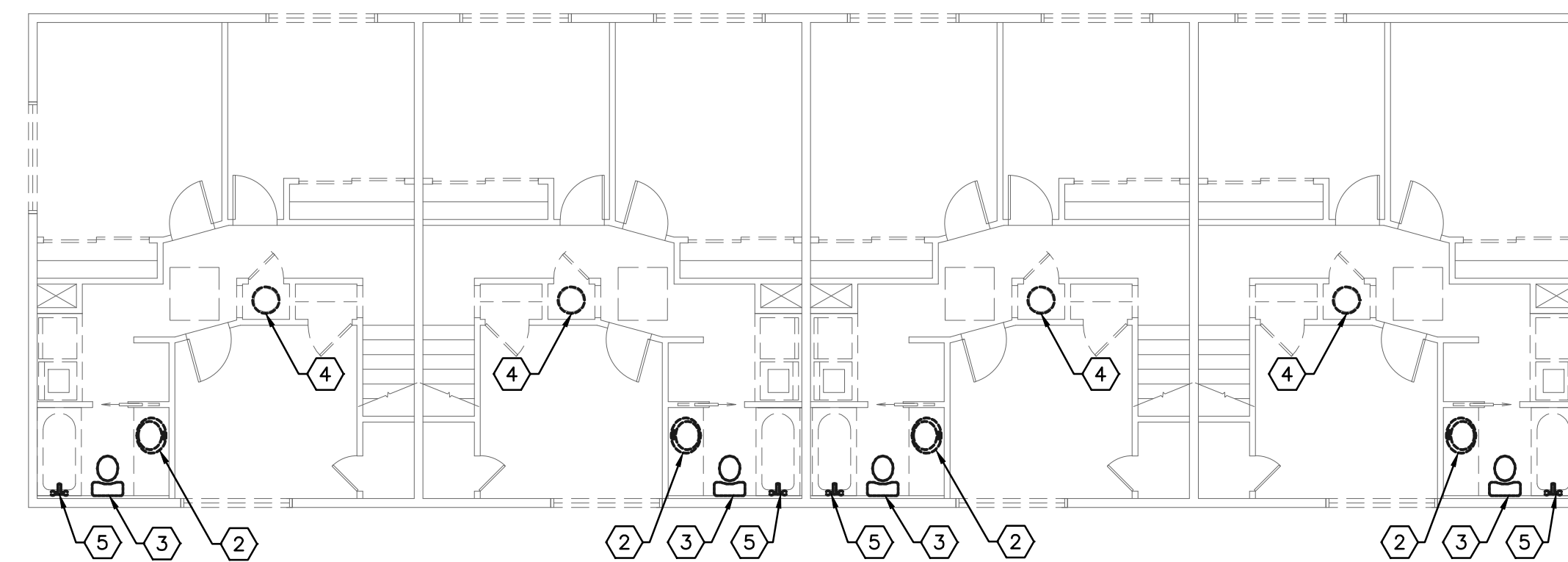
1 FIRST FLOOR DEMO PLAN BUILDING 'TYPE A' - PLUMBING
SCALE: 1/8"=1'-0"
0 4' 8' 16'



2 SECOND FLOOR DEMO PLAN BUILDING 'TYPE A' - PLUMBING
SCALE: 1/8"=1'-0"
0 4' 8' 16'



2 FIRST FLOOR DEMOL PLAN BUILDING 'TYPE B' - PLUMBING
SCALE: 1/8"=1'-0"
0 4' 8' 16'



3 SECOND FLOOR DEMO PLAN BUILDING 'TYPE B' - PLUMBING
SCALE: 1/8"=1'-0"
0 4' 8' 16'



monighan design
710 Twelfth Street
Sacramento, CA 95814
Tel: 916.448.5401
www.monighan.com



Date Signed: 11/01/16

Stanton
ENGINEERING
PROJECT 15073
1819 K Street, Suite 250
Sacramento, CA 95811
TEL: 916.288.6250
www.stantoneng.com

BUILDINGS 'A' AND 'B'
FIRST AND SECOND FLOOR
DEMO PLANS - PLUMBING

RICHLAND HOUSING PHASE II
DEVELOPMENT 1, BUILDING TYPES 'A', 'B' & 'C'
REHABILITATION & IMPROVEMENTS
YUBA CITY, CALIFORNIA 95992

DATE 11/24/2016
DRAWN BY GS/NN/KD
JOB 15002-000
SHEET

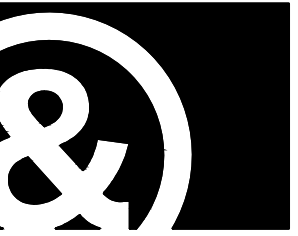
P2.1

GENERAL SHEET NOTES

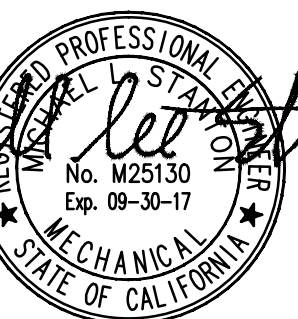
- A. DISCONNECT GAS PIPING FROM ALL EXISTING GAS METERS. DEMOLISH OR ABANDON IN PLACE ALL GAS PIPING AS REQUIRED.

SHEET KEYNOTES

- 1 REMOVE EXISTING KITCHEN SINK AND ALL ASSOCIATED PIPING.
- 2 REMOVE EXISTING LAVATORY AND ALL ASSOCIATED PIPING.
- 3 REMOVE EXISTING WATER CLOSET AND ALL ASSOCIATED PIPING.
- 4 REMOVE EXISTING WATER HEATER AND ALL ASSOCIATED PIPING.
- 5 REMOVE EXISTING TUB SPOUT, SHOWER HEAD, CONTROL VALVE AND DRAIN. OPEN UP FLOOR AND REMOVE EXISTING TRAP.



monighandesign
 710 Twelfth Street
 Sacramento, CA 95814
 (916) 448-5401
 www.monighan.com



Date Signed: 11/01/16

Stanton
 ENGINEERING

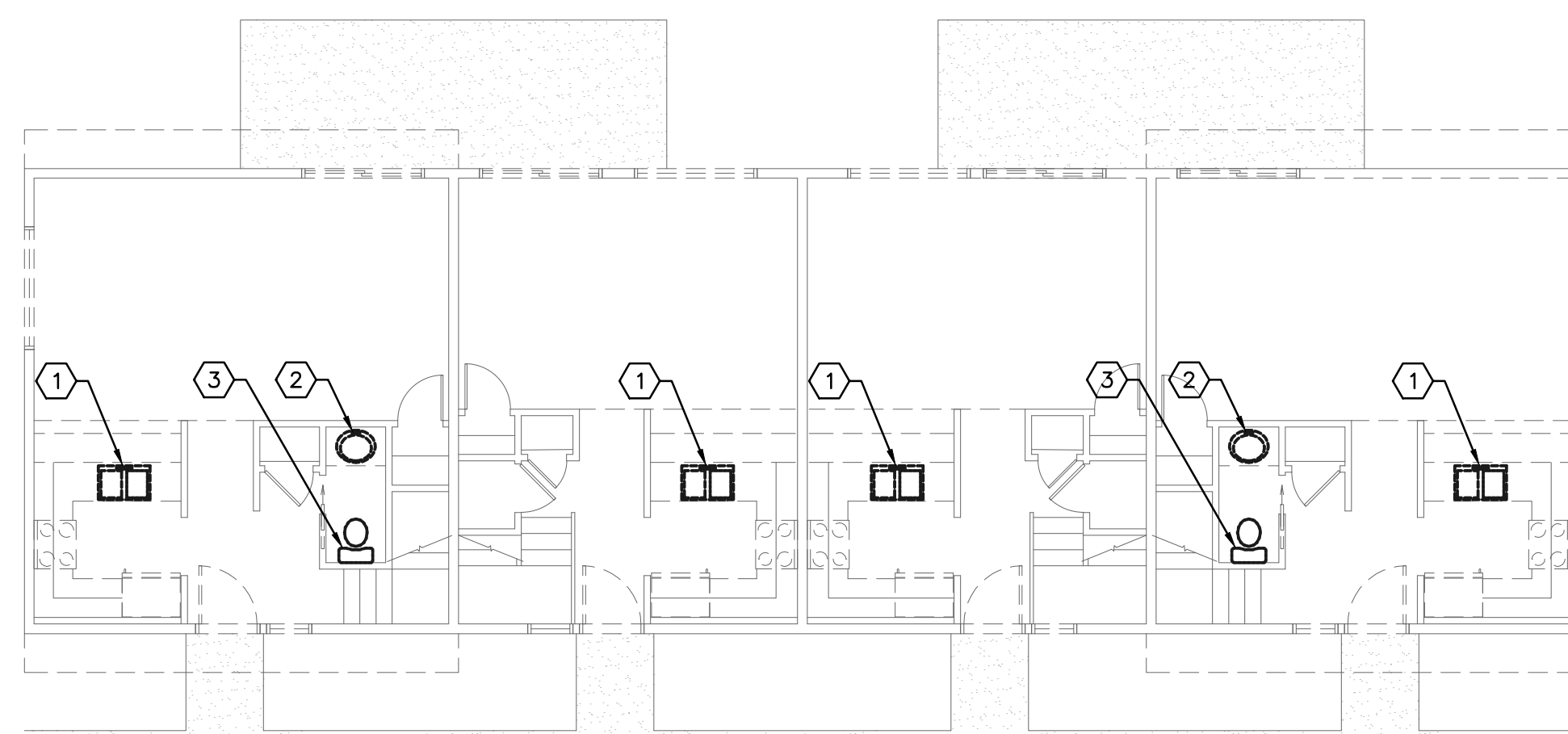
PROJECT 15073
 1819 K Street, Suite 250
 Sacramento, CA 95811
 TEL 916.288.6250
 www.stantoneg.com

BUILDING 'C'
 FIRST AND SECOND FLOOR
 DEMO PLANS - PLUMBING

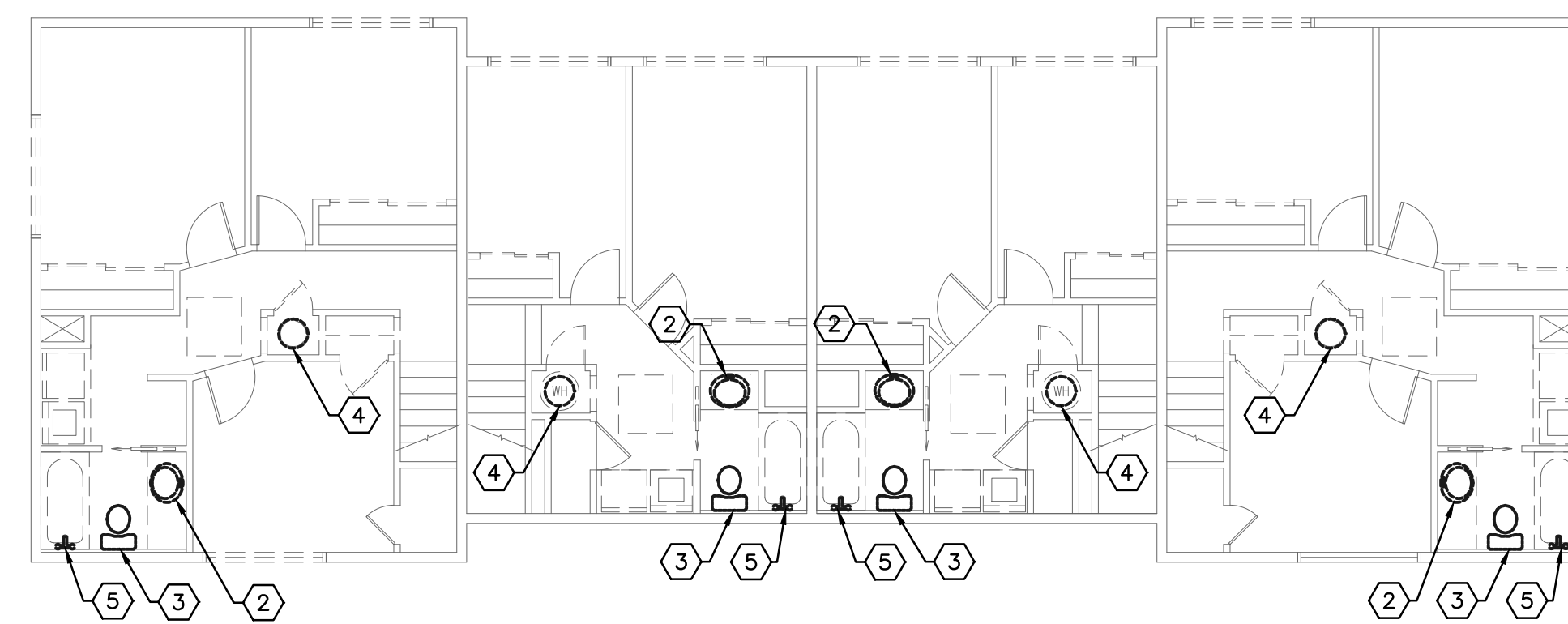
RICHLAND HOUSING PHASE II
 DEVELOPMENT 1, BUILDING TYPES 'A', 'B' & 'C'
 REHABILITATION & IMPROVEMENTS
 YUBA CITY, CALIFORNIA 95992

DATE 11/24/2016
 DRAWN BY GS/NN/KD
 JOB 15002-000
 SHEET

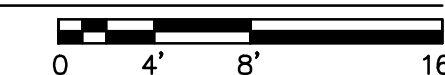
P2.2



1 FIRST FLOOR DEMO PLAN BUILDING 'TYPE C' - PLUMBING
 SCALE: 1/8"=1'-0" (TYPICAL FOR BUILDING 5)



2 SECOND FLOOR DEMO PLAN BUILDING 'TYPE C' - PLUMBING
 SCALE: 1/8"=1'-0" (TYPICAL FOR BUILDING 5)

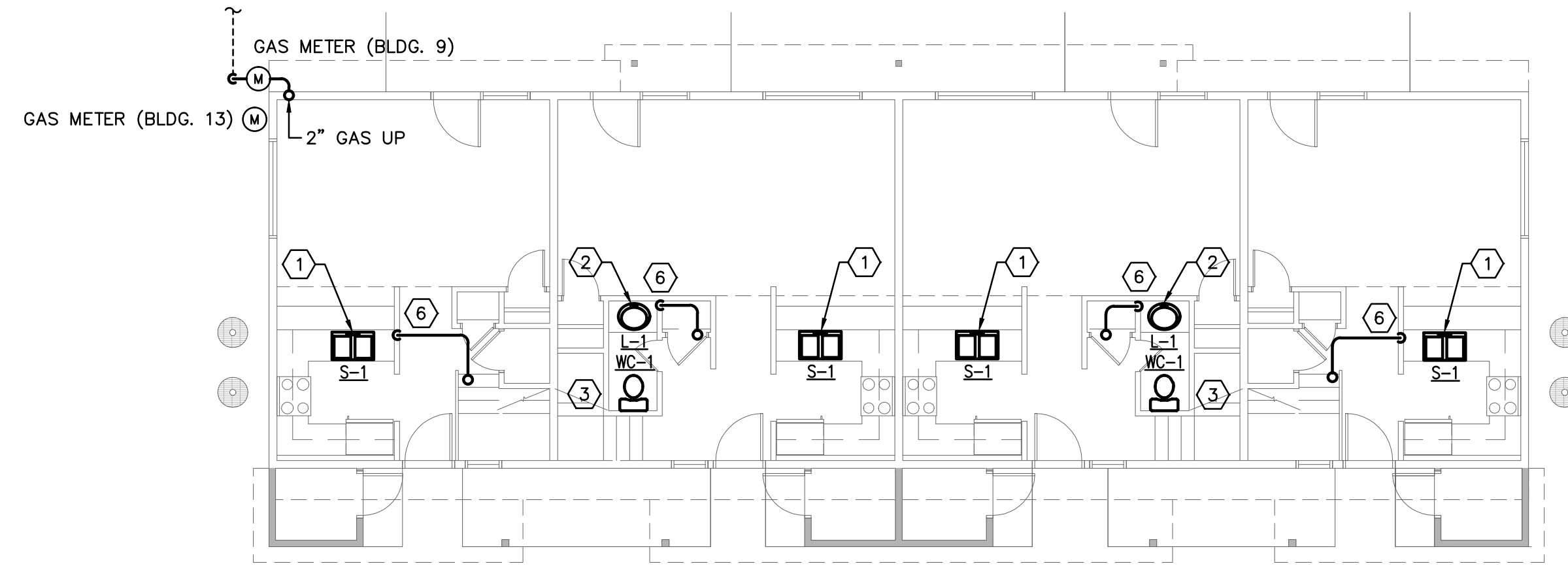


GENERAL SHEET NOTES

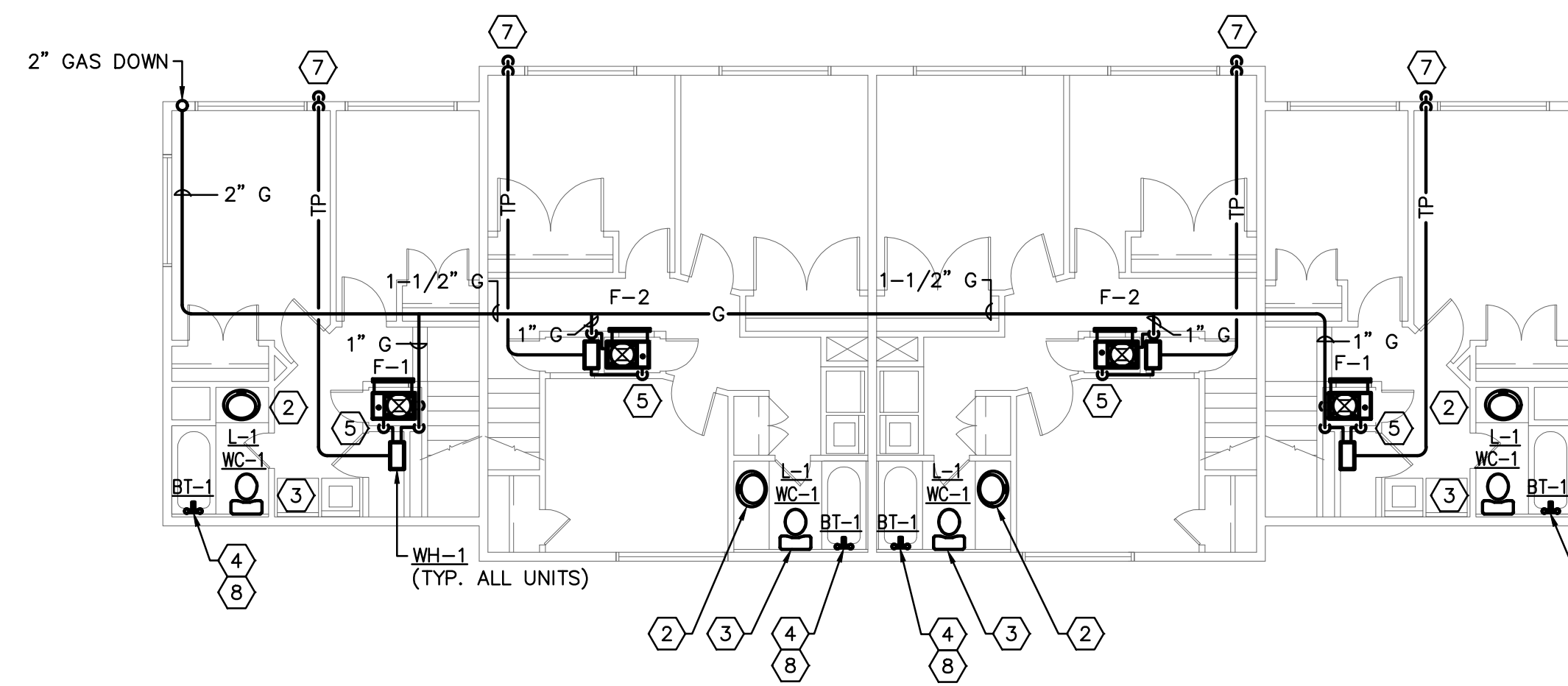
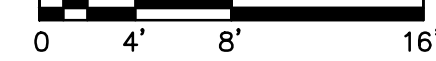
- A. FIELD VERIFY EXACT LOCATION OF ALL GAS METERS.
- B. GAS PIPING AND TEMPERATURE AND RELIEF PIPING SHOWN ON DRAWING 2 IS TYPICAL FOR ALL TYPE B BUILDINGS. ADJUST AND EXTEND GAS PIPING PER GAS METER LOCATION FOR ALL TYPE B BUILDINGS.

SHEET KEYNOTES

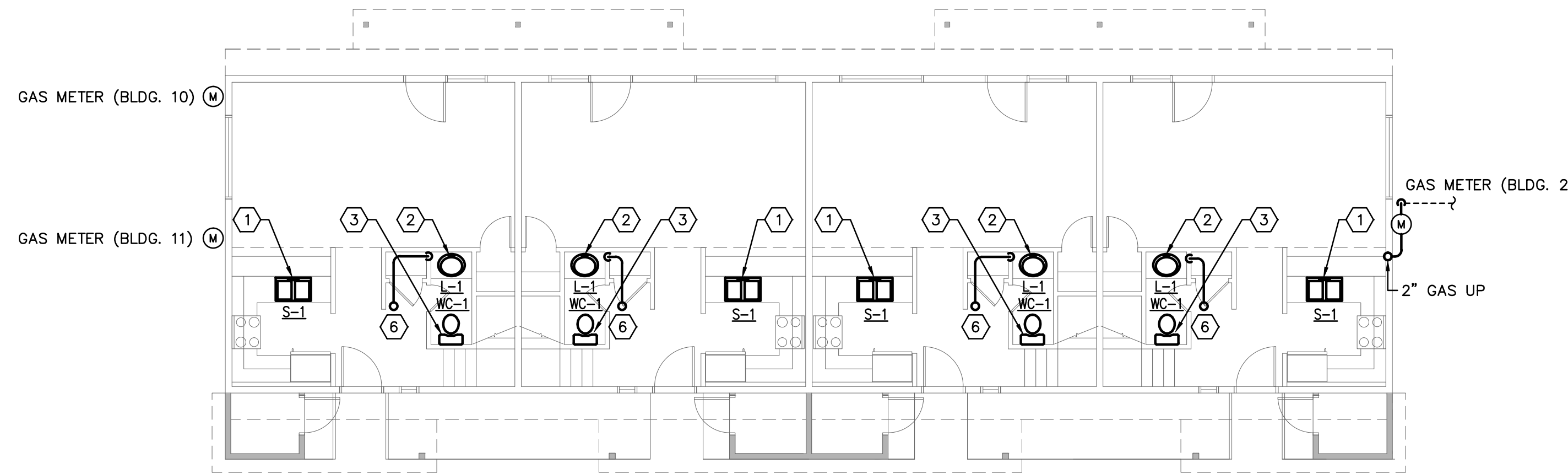
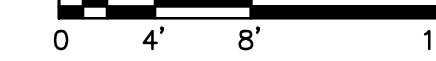
1. INSTALL NEW KITCHEN SINK. CONNECT TO EXISTING PIPING AS REQUIRED.
2. INSTALL NEW LAVATORY. CONNECT TO EXISTING PIPING AS REQUIRED.
3. INSTALL NEW WATER CLOSET. CONNECT TO EXISTING PIPING AS REQUIRED.
4. INSTALL NEW TUB SPOUT, SHOWER HEAD, CONTROL VALVE AND DRAIN. CONNECT TO EXISTING PIPING AS REQUIRED.
5. 1 INCH CONDENSATE DRAIN PIPING FROM COOLING COIL, FURNACE DOWN AND TANKLESS WATER HEATER TO FLOOR BELOW.
6. 1 INCH CONDENSATE DRAIN PIPING FROM COOLING COIL, FURNACE AND TANKLESS WATER HEATER FROM FLOOR ABOVE. ROUTE OVER TO WALL. DROP DOWN IN WALL AND CONNECT TO SINK TAILPIECE.
7. ROUTE 3/4 INCH TEMPERATURE AND RELIEF PIPING FROM WATER HEATER UP IN CEILING SPACE TO EXTERIOR WALL. DROP DOWN IN EXTERIOR WALL AND DAYLIGHT TO OUTSIDE, ELBOW DOWN MINIMUM 6 INCHES ABOVE GRADE.
8. INSTALL NEW TRAP ON EXISTING PIPING. FIELD VERIFY EXACT SIZE. 2 INCH MINIMUM.



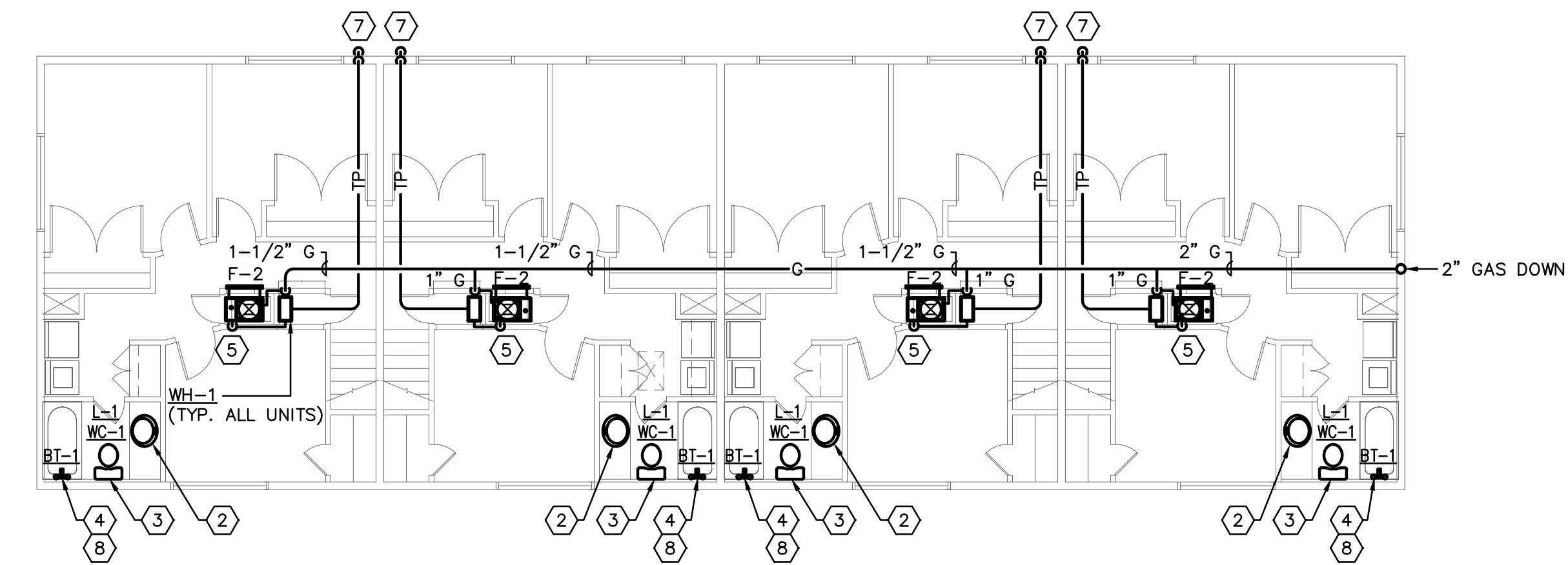
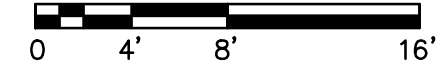
1 FIRST FLOOR PLAN BUILDING 'TYPE A' - PLUMBING
SCALE: 1/8"=1'-0"



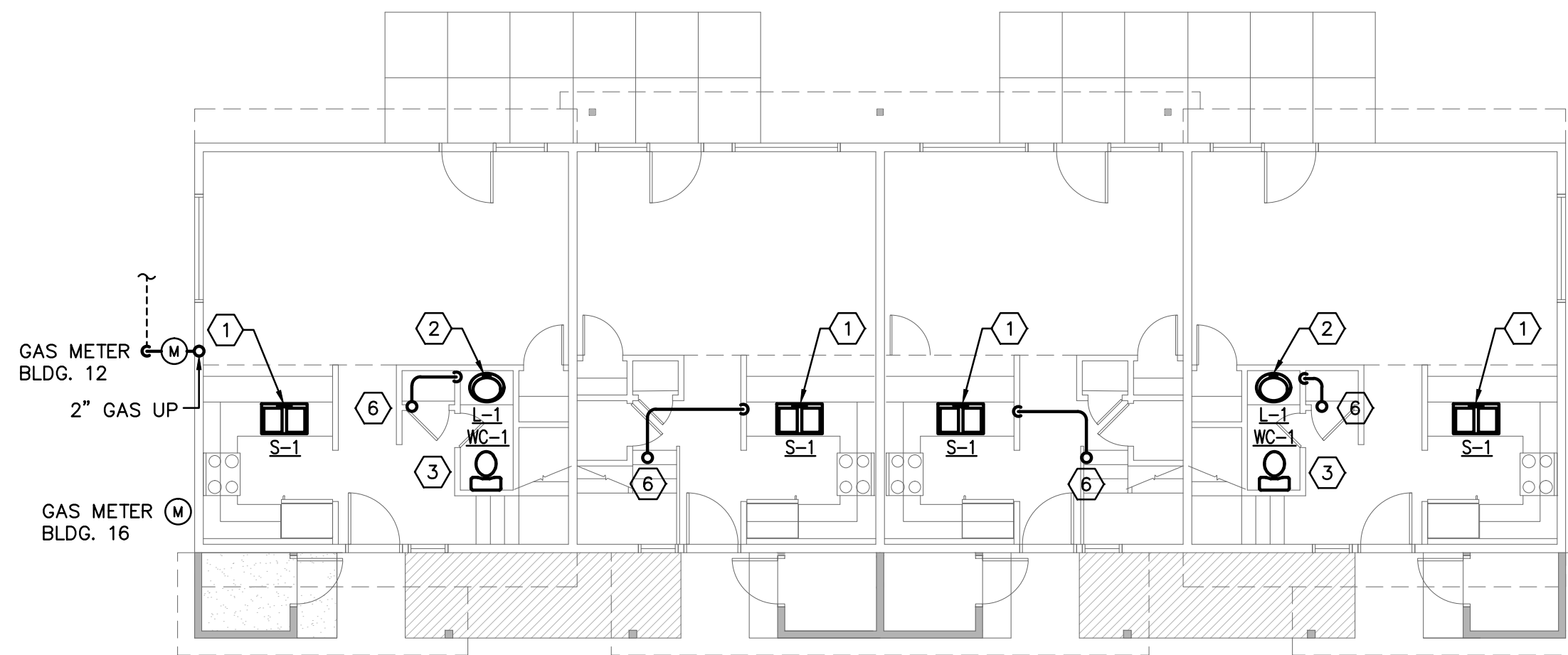
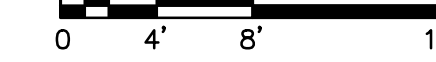
2 SECOND FLOOR PLAN BUILDING 'TYPE A' - PLUMBING
SCALE: 1/8"=1'-0"



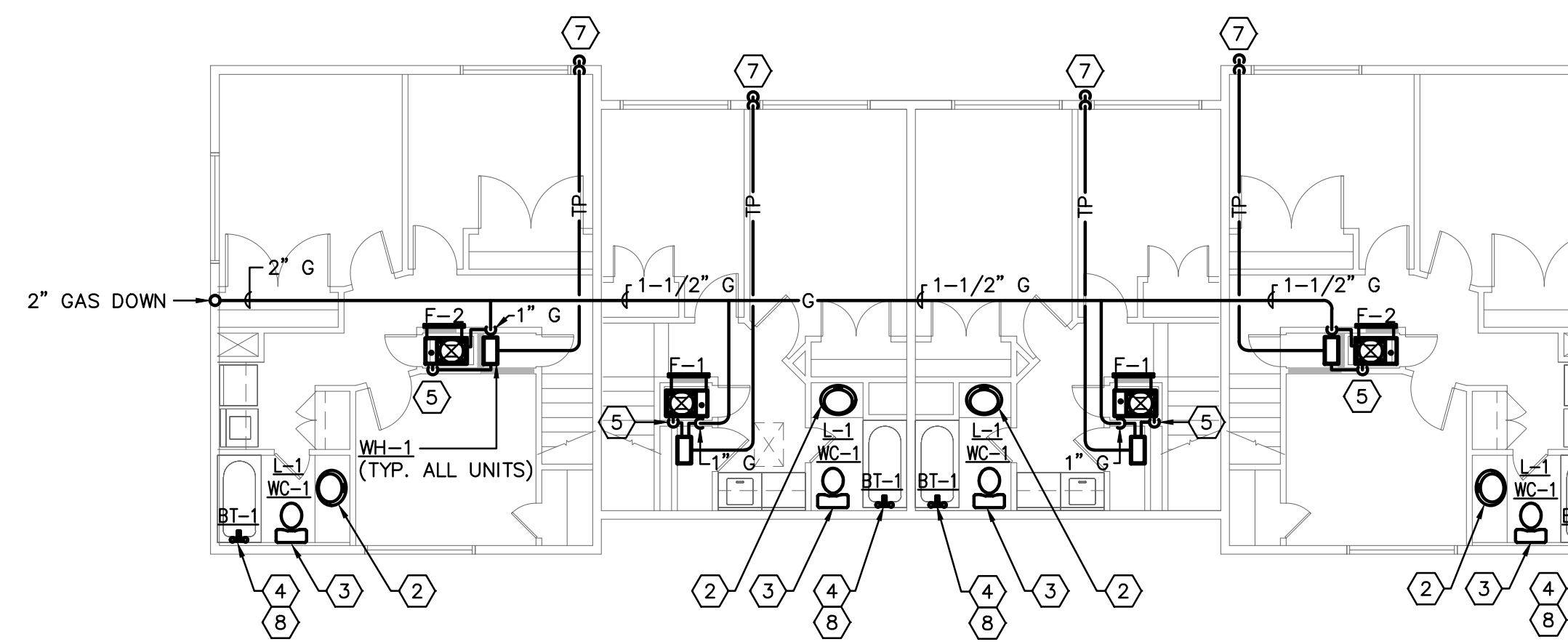
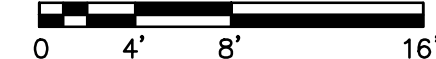
3 FIRST FLOOR PLAN BUILDING 'TYPE B' - PLUMBING
SCALE: 1/8"=1'-0"



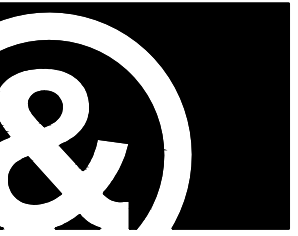
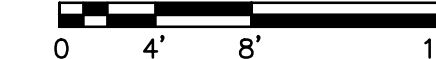
4 SECOND FLOOR PLAN BUILDING 'TYPE B' - PLUMBING
SCALE: 1/8"=1'-0"



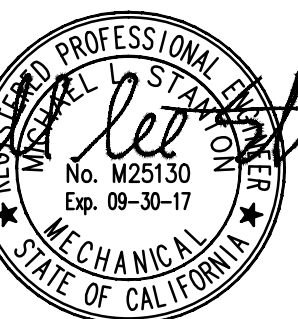
5 FIRST FLOOR PLAN BUILDING 'TYPE C' - PLUMBING
SCALE: 1/8"=1'-0"



6 SECOND FLOOR PLAN BUILDING 'TYPE C' - PLUMBING
SCALE: 1/8"=1'-0"



monighan design
710 Health Street
Sacramento, CA 95811
tel: 916.448.5401
www.monighan.com



Date Signed: 11/08/16

Stanton
ENGINEERING
PROJECT 15073
1819 K Street, Suite 250
Sacramento, CA 95811
TEL: 916.288.6250
www.stantoneng.com

BUILDING 'A', 'B' AND 'C'
FIRST AND SECOND FLOOR
PLANS - PLUMBING

RICHLAND HOUSING PHASE II
DEVELOPMENT 1. BUILDING TYPES 'A', 'B' & 'C'
REHABILITATION & IMPROVEMENTS
YUBA CITY, CALIFORNIA 95992

DATE 11/24/2016
DRAWN BY GS/NN/KD
JOB 15002-000
SHEET

P2.3